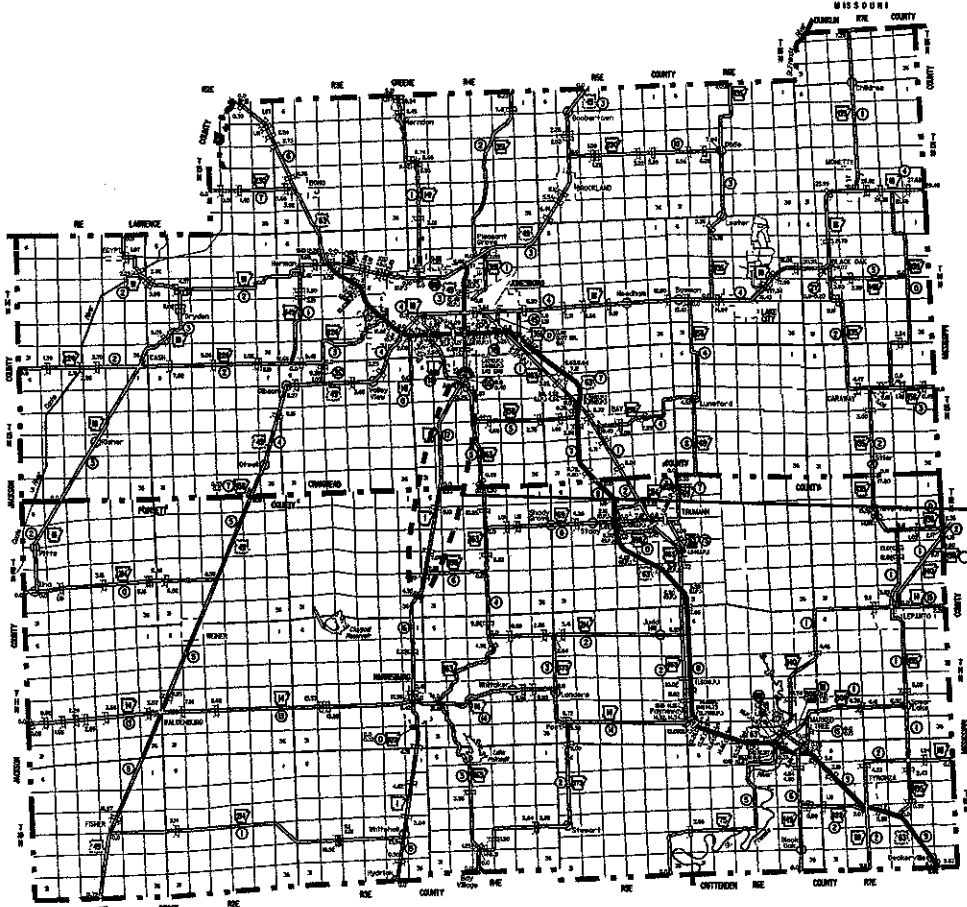


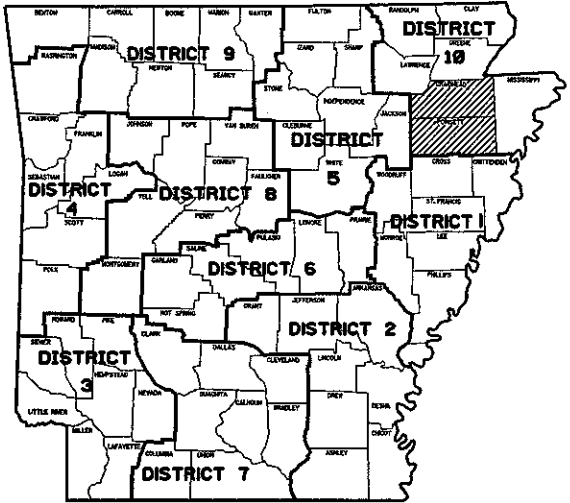
ARKANSAS STATE HIGHWAY AND TRANSPORTATION DEPARTMENT  
CONSTRUCTION PLANS

CROSS CO. LN. - JONESBORO  
(PASSING LANES) (S)  
POINSETT & CRAIGHEAD COUNTIES  
ROUTE 1 SECTIONS 16 & 17  
JOB 100526  
FEDERAL AID PROJECT MGL-5616(1)

DATE REVISED	DATE FILMED	DATE REVISED	DATE FILMED	FED. RD. DIST. NO.	STATE	FED. AID PROJ. NO.	SHEET NO.	TOTAL SHEETS
5-21-01				6	ARK.			
				JOB NO.	100526		1	185
				(2) CROSS CO. LN. - JONESBORO (PASSING LANES) (S)				



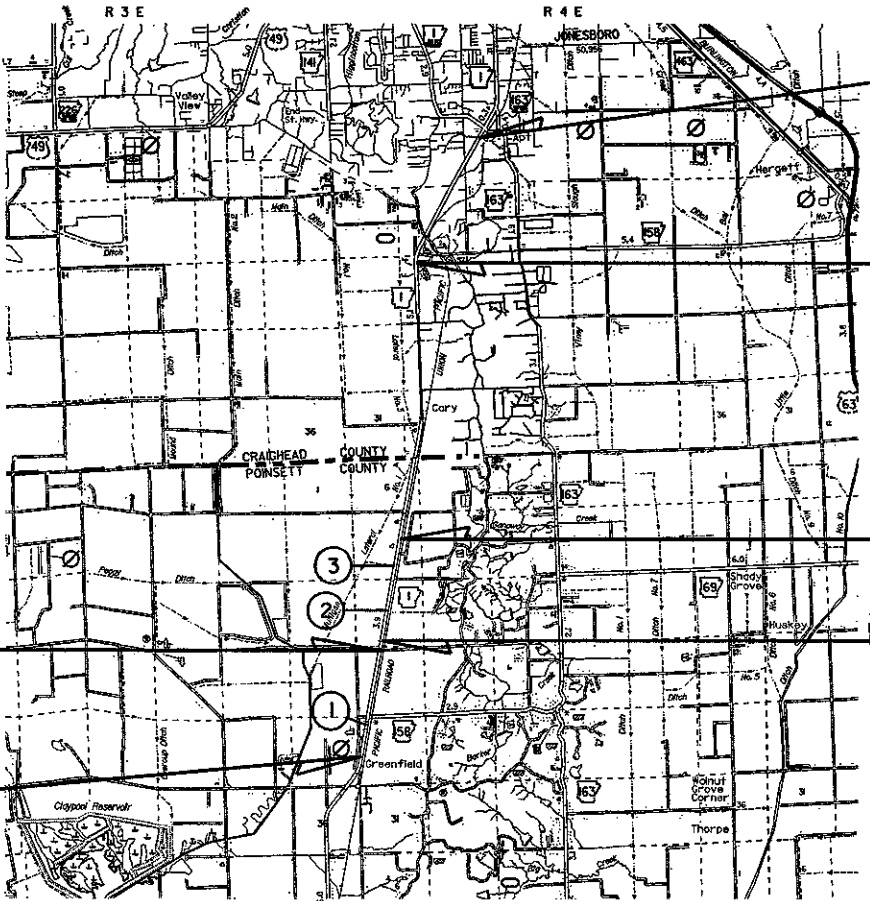
POINSETT & CRAIGHEAD COUNTIES



ARK. HIGHWAY DISTRICT 10

PROJECT LOCATION

NOT TO SCALE



STA. 712+00.00  
END SECTION 3  
JOB 100526

STA. 602+00.00  
BEGIN SECTION 3  
LOG MILE 2.86

STA. 560+00.00  
END SECTION 2

STA. 483+50.00  
BEGIN SECTION 2  
LOG MILE 7.11

STA. 480+00.00  
END SECTION 1

STA. 400+00.00  
BEGIN SECTION 1 JOB 100526  
LOG MILE 5.52

DESIGN TRAFFIC DATA

DESIGN YEAR-----2021  
2001 ADT-----8850  
2021 ADT-----14450  
2021 DHV-----1590  
DIRECTIONAL DISTRIBUTION-----0.60  
TRUCKS-----12%  
DESIGN SPEED-----60 MPH



RECOMMENDED FOR APPROVAL

BRIDGE DESIGN ENGINEER

ROADWAY DESIGN ENGINEER

DISTRICT ENGINEER

APPROVED

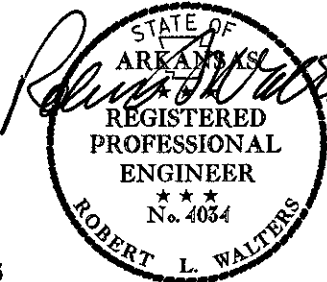
CHIEF ENGINEER

U.S. DEPARTMENT OF TRANSPORTATION  
FEDERAL HIGHWAY ADMINISTRATION  
RECOMMENDED FOR APPROVAL

APPROVED

DIVISION ENGINEER

DATE



P.E. JOB 001853  
NON-PART.

05-02-2001

STRUCTURES OVER 20' SPAN

- 1 STA. 426+72 IN PLACE  
TRI. 7' X 4' X 90' R.C. BOX CULVERT  
ON 15° RT. FWD. SKEW  
RETAIN & EXTEND 12' RT.  
SPAN = 24.16'
- 2 STA. 508+75 CONSTRUCT  
DBL. 7' X 4' X 102' R.C. BOX CULVERT  
ON 30° RT. FWD. SKEW AND  
STA. 508+88 IN PLACE  
8' X 4' X 90' R.C. BOX CULVERT  
ON 30° RT. FWD. SKEW  
RETAIN AND EXTEND 12' RT.  
SPAN = 28.49'
- 3 STA. 545+62 IN PLACE  
TRIPLE 6' X 3' X 85' R.C. BOX CULVERT  
RETAIN & EXTEND 11' RT.  
SPAN = 20.33'

MID POINT OF JOB 001853  
LAT.: N 35° 31' 52"  
LONG.: W 90° 43' 52"

JOB 100526		
GROSS LENGTH OF PROJECT	26,650.00 FEET	5.047 MILES
NET LENGTH OF ROADWAY	26,577.02 FEET	5.033 MILES
NET LENGTH OF BRIDGES	72.98 FEET	0.014 MILES
NET LENGTH OF PROJECT	26,650.00 FEET	5.047 MILES

STA. 508+75 CONSTRUCT  
DBL. 7' X 4' X 102' R.C. BOX CULVERT  
ON 30° RT. FWD. SKEW  
D.A. = 544 Ac.; Q50 = 950 c.f.s.

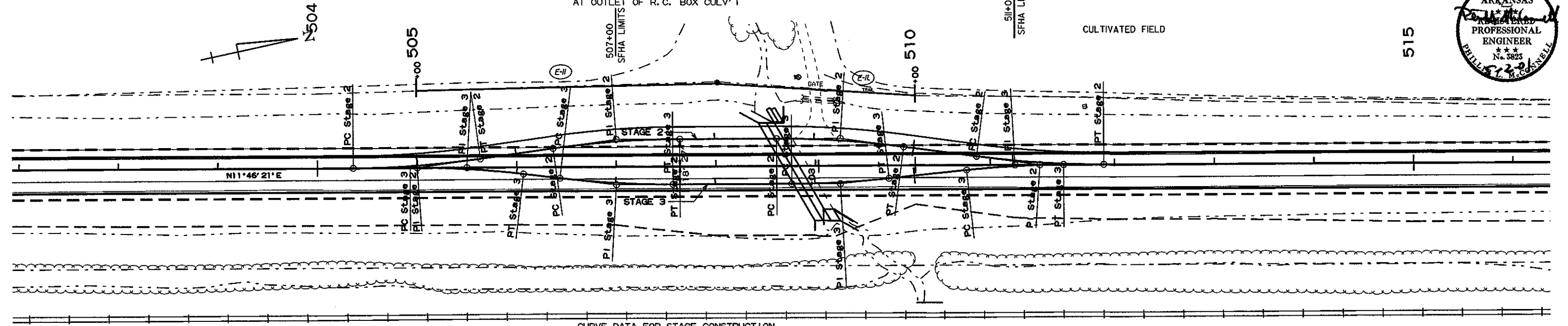
STA. 508+88 IN PLACE  
8' X 4' X 90' R.C. BOX CULVERT  
ON 30° RT. FWD. SKEW  
RETAIN & EXTEND 12' RT.  
D.A. = 544 Ac.; Q50 = 950 c.f.s.

STA. 509+03 IN PLACE  
DBL. 24' X 30' C.M. PIPE CULVERT  
LT. SIDE DRAIN  
RETAIN

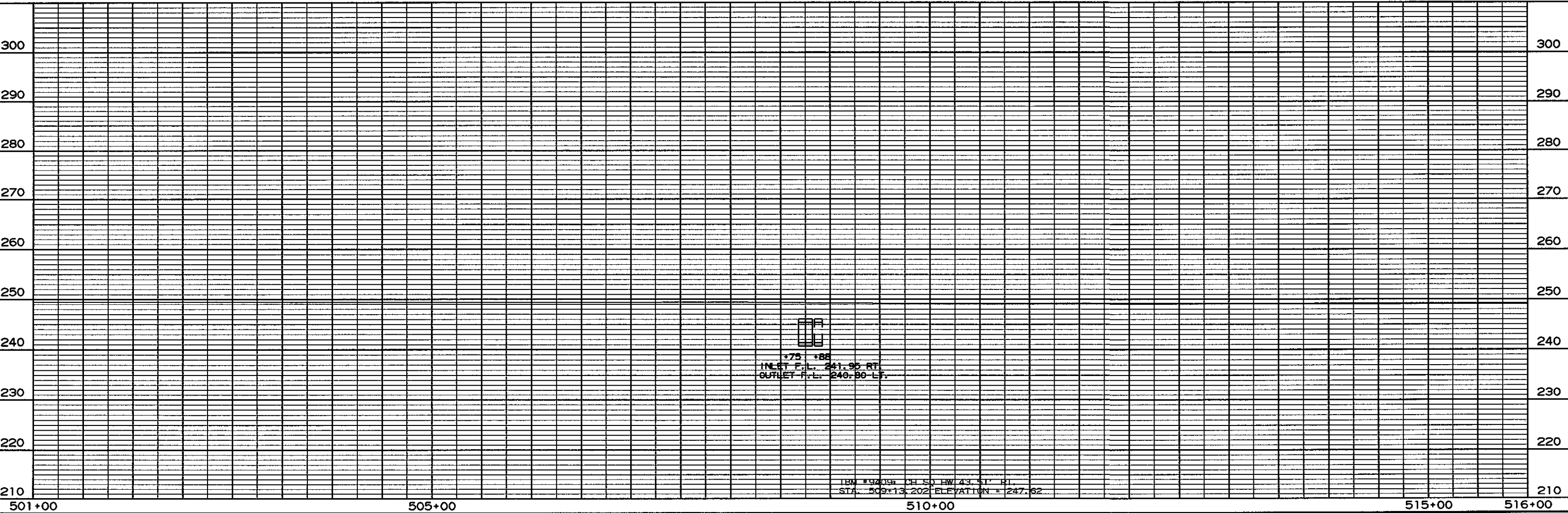
STA. 508+88 INSTALL  
DBL. 48' X 20' TEMP. PIPE CULV'T  
ON 30° RT. FWD. SKEW  
AT OUTLET OF R.C. BOX CULV'T

DATE REVISED	DATE FILMED	DATE REVISED	DATE FILMED	FED. RD. DIST. NO.	STATE	FED. AID PROJ. NO.	SHEET NO.	TOTAL SHEETS
5-01-01				6	ARK.			
				JOB NO.	100526		37	185

PLAN/PROF. STA. 501+00 - STA. 516+00



STAGE 2				STAGE 3			
P.I. 505+00.00	P.I. 507+01.62	P.I. 509+26.43	P.I. 511+28.05	P.I. 505+50.00	P.I. 507+00.94	P.I. 509+25.81	P.I. 511+01.64
$\Delta = 7^{\circ} 41' 19.1''$ LT.	$\Delta = 7^{\circ} 41' 18.7''$ RT.	$\Delta = 7^{\circ} 41' 17.8''$ RT.	$\Delta = 7^{\circ} 41' 14.9''$ LT.	$\Delta = 6^{\circ} 50' 33.3''$ RT.	$\Delta = 6^{\circ} 50' 33.2''$ LT.	$\Delta = 5^{\circ} 52' 20.6''$ LT.	$\Delta = 5^{\circ} 52' 21.5''$ RT.
D = 6' 00' 00"	D = 6' 00' 00"	D = 6' 00' 00"	D = 6' 00' 00"	D = 6' 00' 00"	D = 6' 00' 00"	D = 6' 00' 00"	D = 6' 00' 00"
T = 64.17'	T = 64.17'	T = 64.17'	T = 64.16'	T = 57.09'	T = 57.09'	T = 48.98'	T = 48.98'
L = 128.05'	L = 128.14'	L = 128.14'	L = 128.13'	L = 114.04'	L = 114.04'	L = 97.67'	L = 97.88'
P.C. 504+35.83	P.C. 506+37.45	P.C. 508+62.26	P.C. 510+63.89	P.C. 504+92.91	P.C. 506+43.85	P.C. 508+76.83	P.C. 510+52.66
P.T. 505+63.98	P.T. 507+65.59	P.T. 509+90.40	P.T. 511+92.02	P.T. 506+06.95	P.T. 507+57.89	P.T. 509+74.70	P.T. 511+50.54



INLET F.L. 241.95 RT.  
OUTLET F.L. 240.90 LF.

IBM #9409 CH 50 HW 43 51' RT.  
STA. 509+13.202 ELEVATION = 247.62



4', 5', 6', 7' AND 8' SPANS      2:1, 3:1 OR 4:1 SLOPES  
DOUBLES      UNDER 5'-0" COVER  
STANDARD DRAWING No. R-230X-0